

Installation Instructions

Warranty No: _____
Please Keep for warranty purposes

B3W / B3WX DRAIN LIGHT OPERATING AND SAFETY INSTRUCTIONS

Congratulations, on your purchase of one of the most advanced LED leakproof sealed ceramic technology lights in the world today. Your Next Generation B3W/B3WX drain light, will provide you with years of trouble free use and enjoyment. AqualDEA's fully sealed leak-proof technology has been proven internationally for many years. Please take a few minutes to read and observe the following installation and safety information.

* Important - B3W / B3WX lights are 12V DC only

WARNING:

1. Underwater LED Lights are extremely bright,
Please **DO NOT** look directly at the light as it may damage your eyes.
2. Your B3W / B3WX **MUST** only be switched on when submersed in water.
3. Accessories included as below:



Stainless steel screw
B3W x 2pcs
B3WX x 4pcs



Heat-Shrink Joining Kit
Ø 3mm x 2
Ø 9mm x 1



Insulated Electrical Crimp
B3W/B3WX x2pcs

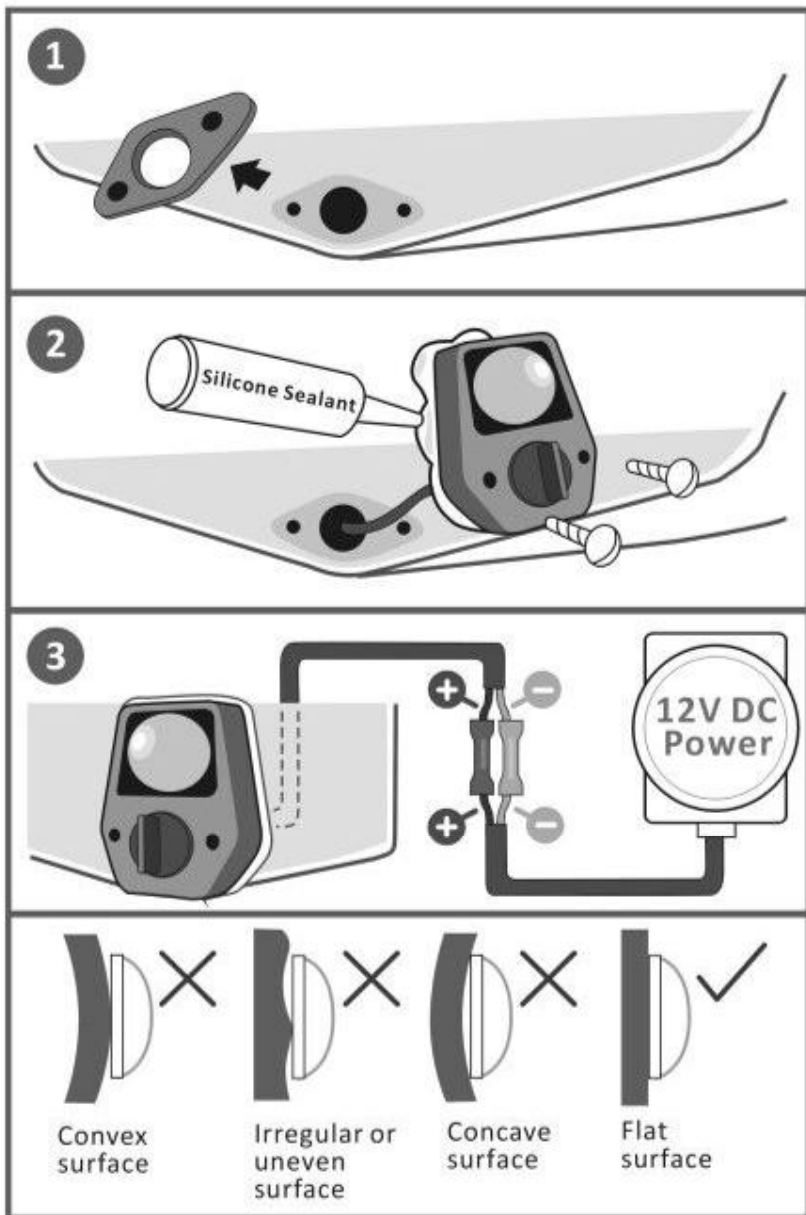


B3W x 1pcs



OR
B3WX x 1pcs

INSTALLATION INSTRUCTIONS



1. Remove the old drain assembly by drilling out the existing rivets. 2 (B3W) or 4 (B3WX) rivets will be required to be removed depending on the type of drain that you are replacing.
2. Make sure the AqualDEA B3W or B3WX fits into the existing hole and the mounting holes also line up with the light body holes. If no changes are required, remove the light and apply a bead of marine grade silicone around the main hole and screw holes.
3. Insert the cable into the hole and position your new drain light into place. Use the supplied screws to secure the light to the transom. Pay particular attention to not over tighten the screws.
4. Ensure the supply voltage is the correct rated voltage before wiring, 12V DC only. When wiring the light to a rated power supply, it is absolutely necessary to connect the light to the correct polarity (Red +ve terminal & Black -ve terminal). Incorrect polarity will damage the light and void warranty. Always consult a qualified electrician when connecting AqualDEA light fixtures. A fuse or suitable protection device must be installed on each light cable. Failure to do so will void warranty. AqualDEA lights must be serviced and operated within the installation instruction guidelines. Failure to adhere to these guidelines may damage the light, shorten the life expectancy and may void warranty.